

Scan & Submit
Your E-Warranty



Or Visit

<https://ikahome.com.my/ika-ewarranty>
SCAN ME FOR E-WARRANTY REGISTRATION

HOME TYPE TRADING SDN BHD

LOT 1848-C, JALAN KPB 8, KG. BARU BALAKONG,
43300 SERI KEMBANGAN,
SELANGOR DARUL EHSAN, MALAYSIA.
TEL: 03-8962 1848 FAX: 03-8961 8848

Range Hood



User's Manual of Range Hood

This Manual applies to Range Hood

- Before operating, please read this Manual carefully, and keep it properly.
- The pictures in this Manual are for reference only.

Foreword & Contents

Foreword

“Beautiful life starts from your kitchen”. Thanks for purchasing Ika kitchen appliances. Ika kitchen appliances undertake the social mission to provide beautiful kitchen lives for mankind, and Ika is committed to becoming the best kitchen life solution supplier in the world. We adhere to the purpose of quality first and customer foremost. If you have any comments and suggestions, please don't hesitate to contact us, and we will provide perfect services according to your needs. Warning: Before installing and using, please read this Manual carefully, and get familiar with the safety precautions in order to use it properly. Note: The appearance and structure of our products are subject to change without prior notice.

Contents

Foreword.....	1
Safety Precautions.....	2
Specification and Parameters.....	3
Packing list.....	3
Product Diagrams.....	4
Safety Instructions.....	5
Installation Method.....	6
Exhaust Pipe Installation.....	7
Electrical Schematic.....	7
Method of use.....	8
Maintenance and Cleaning.....	12
Trouble Shooting.....	13

Safety Precautions

1. This is an appliance designed for home use by adults.
2. The appliance must be installed by a skilled and qualified installer.
3. Keep electrical appliances out of reach from children. Donot let them operate the appliances without supervision.
4. Before installation, check if the main supply voltage is matched with the voltage of appliance.
5. To protect against the risk of electrical shock, do not immerse the appliance, cord or plug into water or any other from liquid.
6. The appliance and its filter should be cleaned regularly in order to keep in good working order.
7. Clean the appliance according to the instruction manual and keep the appliance from the danger of burning.
8. The room must be well-ventilated when using range hood together with other cooking appliances.
9. For any replacements or alterations that may be required to contact an authorized Technical Assistance Centre and insist on the use of original spare parts. No parts or components should be removed or replaced except by a qualified person.

Important:

The manufacturer cannot be held responsible for damage to property or personal inquiry resulting from incorrect installation.

This appliance is not intended for use by persons (including children) with reduced physical, sensory or mental capabilities, or lack of experience and knowledge, unless they have been given supervision or instruction concerning use of the appliance by a person responsible for their safety. Children should be supervised to ensure that they do not play with the appliance.

Specifications and Parameters

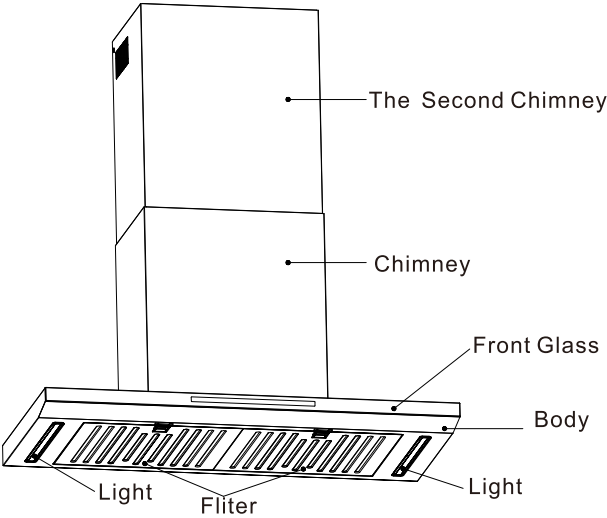
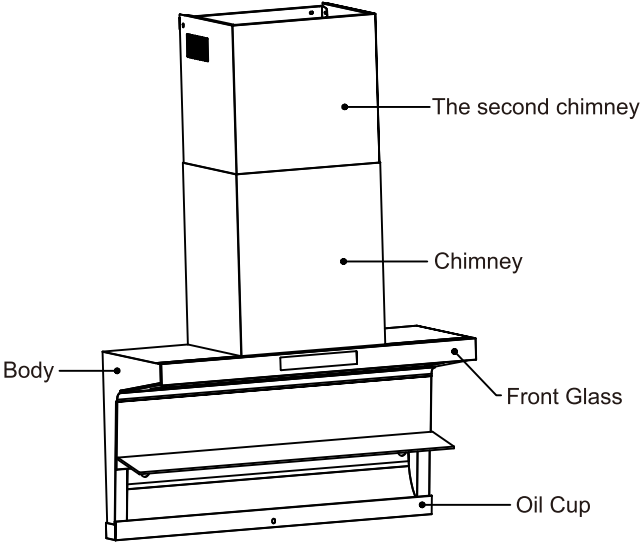
Product Name	Range Hood	Range Hood
Model Number	IKA-BADEN PRO	IKA-HESSE
Voltage	220V-240V~	220V-240V~
Frequency	50-60Hz	50-60Hz
Rated Motor Power	300W	180W
Noise Level	<48db	<48db
Light Power	1x4.5W	2x3W
Auto Clean Power	75W	60W

★ Note: Refer to the mark cn the nameplate of the cooktop for the rated gas pressure.

Packing list

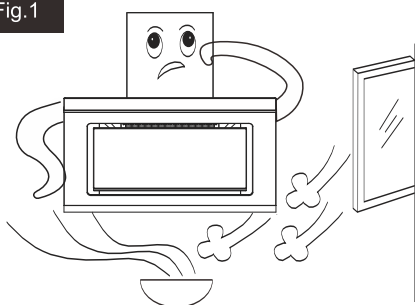
NO.	Model Number	IKA-BADEN PRO	IKA-HESSE
1	Range Hood	1pc	1pc
2	Exhaust pipe	1pc	1pc
3	Hand strip	1pc	1pc
4	Oil collector	1pc	1pc
5	Instruction manual	1pc	1pc
6	Supporting bar for chimney cover	1pc	1pc
7	Self tapping screw	5pcs	5pcs
8	Expanded colloid	3pcs	3pcs
9	Expanded screw	5pcs	5pcs
10	Limit screw	/	/
11	Wood	4pcs	4pcs
12	Foam	1 set	1 set

Product Diagrams



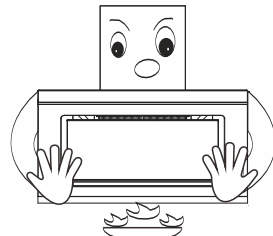
Safety Instructions

Fig.1



- ❑ Do not fix the hood so high, to prevent air flow from outside, which affect the efficiency.

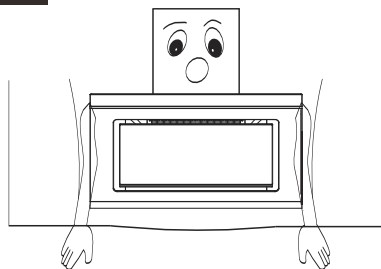
Fig. 2



Warning

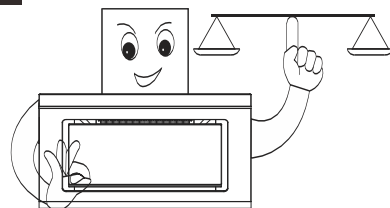
- ❑ Do not burn the hood directly, to avoid damaging the hood and causing accidents.

Fig. 3



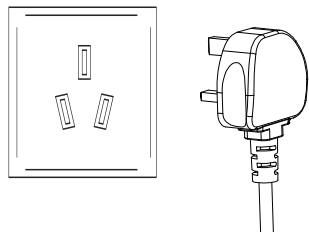
- ❑ Please keep an enough space for hood installing & dismantling; it is helpful for inspection and maintenance.

Fig.4



- ❑ Please keep the hood in balance while installing.

Fig.5



- ❑ Please use single-phase socket and it should be well connected with the grounding.

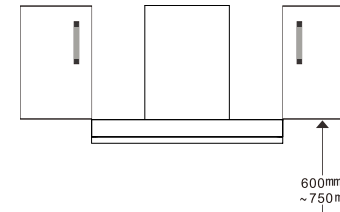
Fig. 6



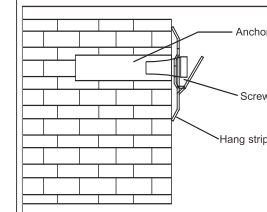
- ❑ Please install by a skilled and qualified installer.

Installation Method

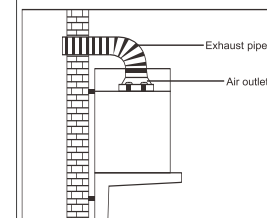
IKA-BADEN PRO
IKA-HESSE



Position:
Find out the fixed place and drill 5 holes with diameter of 10mm and 50mm depth.



Hang strip installation:
Insert 5 anchors into the holes and tighten the hang strip with screws.



Exhaust pipe installation:
Fix the exhaust pipe and air outlet with ST3x8 self tapping screw and then throw out to the other end of pipe toward outside or public channel.

Range Hood Installation:

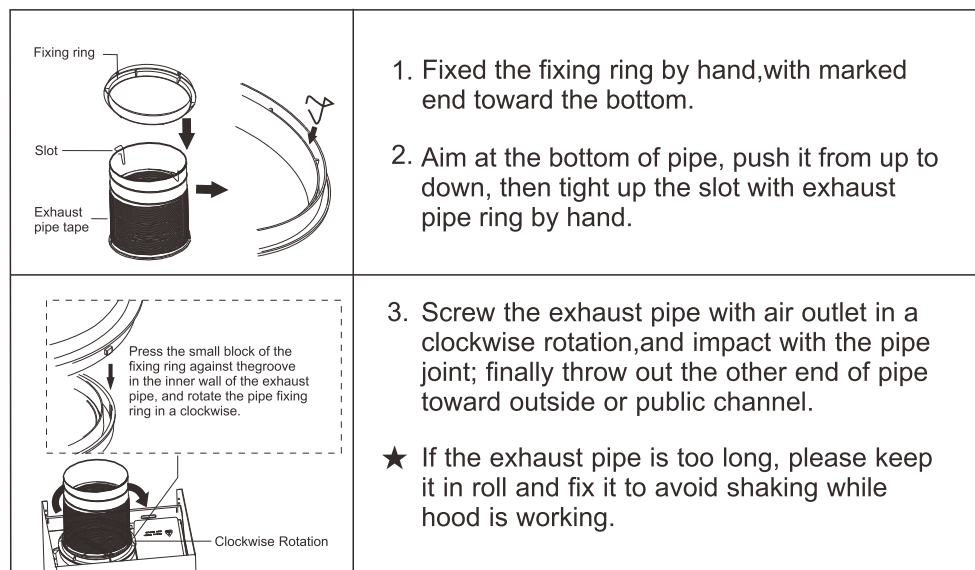
Hand the range hood and make sure it is in level, and screw up range hood with hand strip toward the wall, to avoid falling down.



Notice

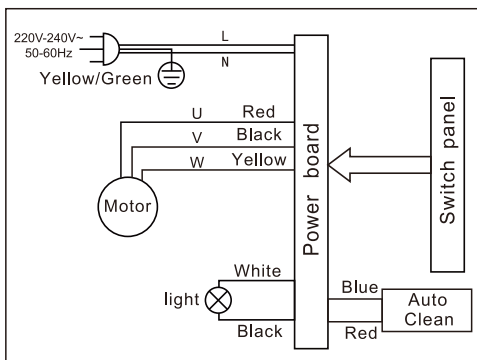
- Make sure the exhaust pipe is not bending less than 90 degree.
- Do not connect with other pipe whose diameter is less than the rated size of exhaust pipe.
- Don't insert too deep if you want to connect pipe with the public one directly, to avoid increasing exhaust resistance.
- Do not discharge smoke from range hood into the hot chimney with smoke from burning gas or other fuels, to avoid fire accident.

Exhaust Pipe Installation

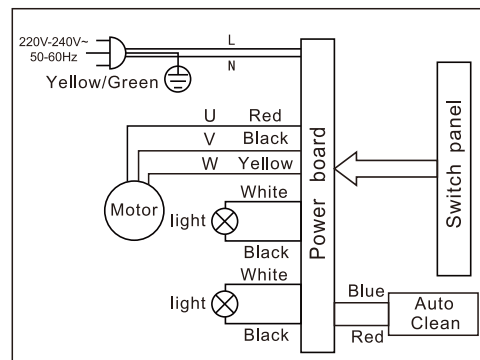


Electrical Schematic

IKA-BADEN PRO



IKA-HESSE



Method of use

IKA-BADEN PRO

Operation Instruction

Connect Power all the indicators turn on ,after 2secs turn off ,enter into off-state with a beep sound ,gesture turn on as default .

Gesture On : In off state ,hand wave from left to right sensor area first time, motor run in speed 1, light turn on .For second time motor run in speed 3, third time ,motor run in speed 5, for fourth time ,motor run in speed 7, for fifth time ,motor run in speed 9, for sixth time turn to speed 1 again ,like this circle .

Gesture Off : Motor is running ,hand wave from right to left ,hood enter into 3 minutes delay function. Wave hand from right to left again ,turn off hood .

Warmly remind: Gesture turn on /off hood ,make sure hand point at left and right area ,the best interval time is 2secs, the best control distance is 80-200mm ,with 5mm transparent glass .

Power: In off state touch it first time enter into standby state ,digital display show FO ,touch it again turn off all functions ,back to off-state .

In off -state press for 3 secs to turn off gesture function, digital screen show OF, 3secs disappear with a beep .Press for 3secs again ,turn on gesture function ,digital screen show ON, 3secs disappear with a beep with a beep .

Delay: In working state touch it ,enter 3minutes delay countdown function state ,power button flash ,digital screen show 03 02 ,last 1 minutes show 60 secs, during it change speed cancel delay function .Touch it again turn off hood directly .Once finish this function ,all others function turn off at the same time .

Speed+: Touch it ,speed+ button flash

1. In standby state touch it motor run in speed 1, digital screen show F1
2. Motor working state ,touch it increase speed ,from F1-F3-F5-F7 (In F7 touch it no reaction)

Speed-: Touch it ,speed - button flash

1. In standby state touch it motor run in speed 1, digital screen show F1
2. Motor working state ,touch it deduct speed ,from F7-F5-F3-F1 (In F1 touch it no reaction)

Method of use

Booster: In standby/working state touch it ,this button flash ,enter 5 minutes boost state .digital screen show F9,after 5minutes countdown,motor change to F7,digital screen show F7,in booster state touch it turn off motor,back to standby state .

Auto Clean: In-standby state ,touch it for 3secs ,button red light flash ,this function start to work,digital screen show 11,enter into countdown,heating film working 10minutes ,1minute motor run in speed 7,digital screen show F7,once finish this function ,range hood turn off all function automatically(Include light).During this function touch the button for 3secs,or touch power button can turn off this function .During this function ,except for auto clean ,light ,power button can operate ,others button can not operate .

Automatic oil clean state :when motor run 30hours(once motor work ,start to calculate time ,turn off have memory function),auto clean button flash(red color)remind user(if motor work reach 30hours),prepare to enter auto clean ,range hood probe current state automatically,if in off-state,enter auto clean automatically,if in-working sate,motor to stop work ,enter into auto-clean state automatically .Each time finish automatically oil clean ,range hood re-calculate motor working time .

Light :In any state turn it to turn on /off light .

Gas lift function ,enter into standby ,motor working state gas lift turn on ,enter into off-state,auto clean state ,gas lift turn off .(Light in outside ,gas lift not open)

Remark(F1:60W,F3:110W,F5:150W;F7:210W;F9:300W

Method of use

Function:4 speed+Boost/Auto Clean/Delay/Gesture(Speed show F1/3/5/7/9)



Function Test:

Connect power,digital screen turn off 2 secs later,enter off -state .

Power:

In off-state ,touch it, power button indicator light turn on ,other indicator light off,digital screen show time :12:00,enter standby-state.

In standby state ,touch it all the indicator lights turn off ,enter off-state .

In off -state ,touch it for 3secs,turn on/off gesture function.(All the buttons flash one time ,remind turn on/off gesture)

Light:

In off state ,touch it ,turn on / off light .

In standby-state、 in working state,touch it all indicators light turn on ,turn on/off light .

Delay function:

In working state .Touch power button ,indicator light flash ,digital screen show 03:00,and countdown in seconds,enter delay turn off function ,turn off all the function.

During delay ,touch speed button ,cancel delay function.

During delay ,touch power button ,cancel delay function.

Boost:

In standby /working state ,touch it ,indicator light turn on (digital screen show F9), digital screen run in 0.1secs,motor run in F9 ,5 minutes boost running ,change to F7 automatically .Touch it again ,motor run in F7 .

Speed +:

60WIn standby state,touch it ,motor run in speed 1,digital screen show F1

80W In speed 1,touch it ,motor run in speed 2,digital screen show F3

130W In speed 2,touch it ,motor run in speed 3,digital screen show F5

180W In speed 3, touch it ,motor run in speed 5,digital screen show F7

Touch again ,no reaction .

Method of use

Speed - :

In standby state ,touch it ,motor run in F1

In speed 1,touch it ,motor keep F1

In speed 9,touch it motor run in F7

In speed 7,touch it motor run in F5

In speed 5,touch it motor run in F3

In speed 5,touch it motor run in F1

Time setting :

In off state,touch set button for 3secs ,enter time setting state ,delay button indicator light turn on ,speed +,speed- and digital screen flash ,touch speed+ add one hour ,continue to touch to add.Touch speed- deduct one hour ,continue to touch to deduct .Touch set button again turn to minute setting state .Touch

speed+ :

add minutes,continue to touch to add ,Touch speed- deduct minutes,continue to touch to deduct.Continue to touch setting button or 10 secs no operation ,exist time setting state .

Auto Clean :

In standby state,touch it for 3secs,digital screen show10:00 countdown,heating 9 minute,last 1minute motor run in speed 4,then turn off all function .

During auto clean ,touch it to turn on /off all functions,back to off -state .

Gesture function :

In connect power state ,wave hand from left to right ,motor run in F1-F3-F5-F7-F1 like this circle .

The distance between hand and glass is 11-15cm.

In working state ,wave hand from right to left ,enter 3 minutes countdown ,once finish ,turn off all the function back to off -state .

In delay function ,wave hand from right to left ,turn off all function automatically, back to off -state .

Maintenance and Cleaning

- ☐ Pull out the electric plug before repairing and maintaining the range hood and clean according to the methods of Introduction, to avoid firing danger.
- ☐ Wear gloves when cleaning surfaces to prevent your hands being hurt by seamed edges.
- ☐ Don't use water to wash the range hood directly.
- ☐ The range hood should be maintained and cleaned regularly depending on the surrounding environment to keep its cleanness, a good effect and a longer service life.
- ☐ Timely cleaning when oil reached two thirds of oil collector , to avoid spilling.Fig. 15 for reference, to remove the oil collector.

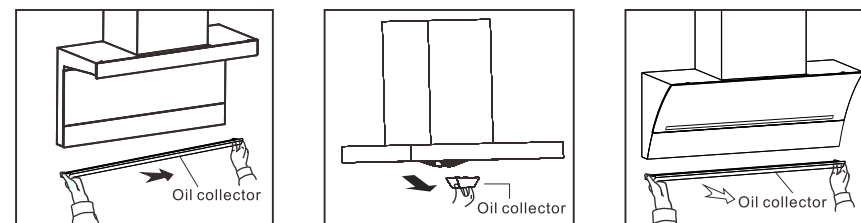


Fig.15

Stainless Steel Surface Cleaning:

Use neutral detergent without abrasive to clean the surface, and do not clean with hard object or steel ball.

Changing a Light:

You must pull off the electric plug before changing a light. Keep the power rate of light no more than 5.0W and you could check the power rate from label.

Notice:

If your range hood occurred the following phenomena, you must unplug the power cord and contact with our service center:

- Irregular sound when opening the range hood.
- Abnormal phenomena or vibration when working.
- Finding unpleasant smell, smoke, heating and other unknown phenomena.

Trouble Shooting

Fault	Cause	Solution
Touch any icon but no responses.	The plug is not or improperly inserted or no power supply.	Plug the power cord.
Touch light icon, but the light cannot turn on.	The light is damaged, poorly contacted with the power supply.	Use a good light or plug the power cord.
There is faradic electricity on the surfaces of the range hood with a slight electric shock.	The electric outlet is not effectively grounded.	Use one-way triple socket and have a good grounding.
Irregular sounds are heard when the impeller operates.	The impeller becomes loose and screws are not fixed.	Tighten up the screw of impeller.
Universal pipe with noise.	Universal pipe does not straightened.	Please install as required.
Oil dripping.	Installation of oil collector is not suitable.	Install correctly.